



NSBC NEWSLETTER

EDITOR: KEVIN DAVIES



Is the NSBC like a duck?

You often hear people talking about things being like a duck. All calm on the surface and mad chaos under the water. I think that is a fair way to describe a bridge club.

Read "May 22" Management Report



More players are coming back to **F2F bridge sessions at NSBC**. F2F Table stats:
Jan=**16%**, Feb=**20%**, Mar=**26%**, Apr =**26%**
Retry the traditional social game we all love!
[Link to F2F Session timetables](#): at "**East Lindfield**" & "**The Willis**"

Not having a partner should not be a reason that you don't play bridge at North Shore Bridge Club.

Need a permanent Partner? Did you know that we have a partner matchmaking service at our club? Sue Crompton will help find you a suitable partner. She knows all members, their bridge level and personality and will be able to give you details of some possible candidates to try. Sue is contactable on 0416 290 867.

Need a temporary Partner?

Has your partner gone on holiday or unable to play? We have several options we would like to remind you of.

1. Pianola has a partner finder service – this is a quick process – just log onto Pianola, click “partner finder” and place advert. This will be emailed to club members. To help, we have made a short tutorial video on how to do this, See button below

2. Alternatively, just arrive/log in **20 mins early** and let the Tournament Director know that you are looking for a partner. They will either find you someone to play with or they will play with you. In other words – **we guarantee you a game**

[View Pianola Partnership Video](#)

Upcoming NSBC Club Event Brochures

[GNOT Direct](#) - Currently Running,
[Men's & Women's Winter MP Pairs](#)
[BAM Teams](#)

Enter Events Links

[Progress scores](#)
[Winter MP Entry](#)
[BAM Entry](#)

Festival Events in June

["2M&T" Restricted & Novice Teams](#)
["2M&T" Restricted & Novice Swiss Pairs](#)
[RB MP Swiss Pairs](#)
["Watermark" Swiss Pairs](#)
[RB Swiss Teams"](#)
["TBIB" IMP/VP Swiss Teams](#)

[Festival Entries](#)

[Results from World Bridge Championships](#)

Bermuda Bowl (Open) [SWITZERLAND](#)

Venice Cup (Ladies) [SWEDEN](#)

d'Orsi Trophy (Seniors) [POLAND](#)

Wuhan Cup (Mixed) [FRANCE](#)

[Peter Hollands did a interesting summary of the final of the Bermuda Bowl](#) on YouTube



[WATERMARK Residences](#) have made a welcome return to the club's Sponsor list. Brochures:
[WATERMARK Festival Swiss Pairs](#)
WATERMARK Club Teams Championship



[TBIB Insurance Brokers](#) are continuing their club Sponsorship
[TBIB Festival Swiss Teams](#)



Two Men and a Truck are continuing their Club Sponsorship of events:

- [Festival Restricted & Novice Teams](#)
- [Festival Restricted & Novice Swiss Pairs](#)

Open Challenge Hand 2 (Bid and Play)

North ♠ 86542 ♥ 873 ♦ A93 ♣ T5	Nil Vul, Dealer: South
South (D) ♠ AKQJT ♥ AKQ ♦ Q74 ♣ AQ	Assuming you can bid and reach the 6♣ contract. West leads the ♣9, a lucky lead into your ♣AQ
	Can you see your way to 12 tricks on this deal?

6 Open hand articles for your enjoyment!. Includes

Brent Manley - Managing Assets

Mike Lawrence - Suit Combinations

Brent Manley - Plan Ahead

Julian Foster - Hand Analysis

Rakesh Kumar - TBIB Swiss Teams

John Mottram - Best Possible

[Read More the "May 22" Open Hands](#)

A selection of 6 articles for our Newer Players to read for your enjoyment.

Pat O'Connor - Set up a Side Suit

Andrew Robson - Establish Suit

Eddie Kantar - Take your chances

Pat Harrington - Careful Planning

Phillip Alder - Defending honours

Julian Foster - Hand Analysis

Rookie Challenge Hand 1 (Bid and Play)

North	<table border="1"><tr><th>West</th><th>North</th><th>East</th><th>South (D)</th></tr><tr><td></td><td></td><td></td><td>1♣</td></tr><tr><td>Pass</td><td>1♣</td><td>Pass</td><td>3♣</td></tr><tr><td>Pass</td><td>6♣</td><td>All Pass</td><td></td></tr></table>	West	North	East	South (D)				1♣	Pass	1♣	Pass	3♣	Pass	6♣	All Pass	
West	North	East	South (D)														
			1♣														
Pass	1♣	Pass	3♣														
Pass	6♣	All Pass															
♠ A J 6 5 4 ♥ A Q ♦ 3 2 ♣ J 8 3 2																	

Assuming you get to the 6♣ contract

South (D)	Opening lead: ♦Q: Plan the play if clubs are 2-1.
♠ K 3 2 ♥ 8 ♦ A 9 5 ♣ A K Q T 9 5	

[Read More the "May 22" Rookie Hands](#)

Members April Congress Successes

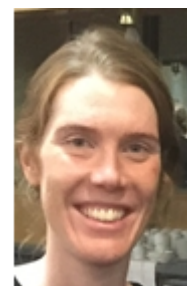
Dagmar Newmann, Heath Henn, Gail McKensie, Martin Brown, Yumin Li, Peter Jeffery, Axel Johansson, Warren Dobes, Peter Gill, Tony Nunn, Neil Ewart, Kevin Davies, Leo Goorevich, David Weston, Helena Dawson, Peter Fitzmaurice, Rob Holgate, Kevin Murray, Neil Williams

Our NSBC Representatives for the [NSWBA State Mixed Pairs Championship](#) F2F on May 28-29 are:

David BEAUCHAMP / Sophie ASHTON
Michael COURTNEY / Joan BUTTS
Patrick NEARY / Liz WILKINSON
Elli URBACH / Kevin DAVIES

2022 Club Champion Race

Only the major **Morgans Swiss Pairs** completed in April, but with the major event "double weight CC points" allocation. A new leader **Sophie Ashton** has emerged as the current leader on 40 CC points.



Morgans Open Swiss Pairs (22T)		VP	CC
1-\$1000	Paul Dalley & Sophie Ashton	161 VP	20
2-\$500	Michael Courtney & Joan Butts	157 VP	14
3-\$300	Mike Hughes & Bruce Neill	149 VP	10
4-\$200	Wei Zhang & William Zhang	157 VP	8
5	Hui Li & Patrick Jiang	137 VP	
6	Kim Neale & Linda King	133 VP	6
7	Ruth Tobin & Helene Pitt	132 VP	4
8	Yumin Li & Peter Jeffery		2
9	Wieslaw Przewozniak & Jerzy Szyszkowski		

Morgans Club Swiss Pairs Championship

Table shows the Final VP scores, and CC points .

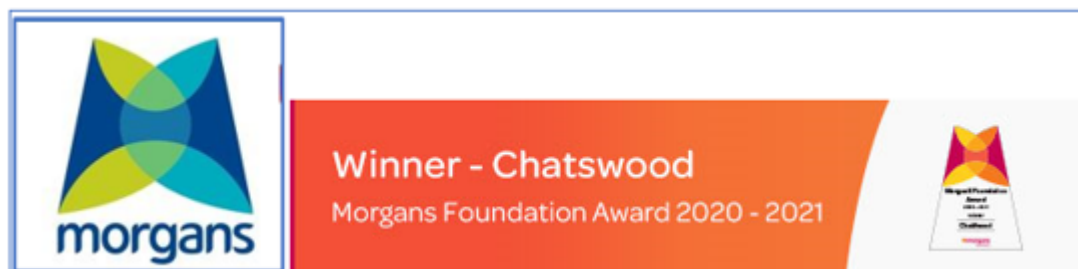
This event was well directed by **Ronnie Ng**.



The winners **Paul Dalley & Sophie Ashton**

[Club's Honour Board](#)
[Website news item](#)
[Full results](#)

Many thanks to our Sponsor "**Morgans**" **Danny Dreyfus**



Morgans Financial, our sponsor of the [Morgans Club Swiss](#)

[Pairs Championship](#), are offering free initial consultations at their Chatswood offices for financial advice for bridge club members.

- “Are you frustrated at how little interest your savings are earning?”
- “Are you paying high adviser fees for low service?”
- “Is Estate Planning on your agenda but constantly being deferred?”

Contact Danny Dreyfus directly on 02 81161717

Email: ***danny.dreyfus@morgans.com.au***

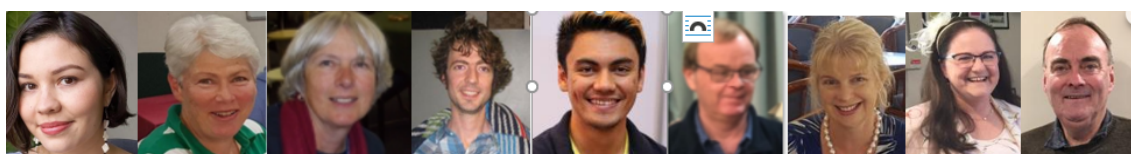


Three NSBC members have made the **2022 Australian Teams** at the Playoffs this month.



April Grade Winners

[Read More - Detailed March Club & Congress Results](#)



NSBC Player Development Corner

["Build on Basics" Online](#) 10am Wed & Thurs with **Jessica Brake**

["Develop Your Skills" Online](#) 9:30am Wednesdays with **Anita Curtis**.

["Gentle Hand Analysis Online"](#) 2pm Wednesdays with **Anita Curtis**

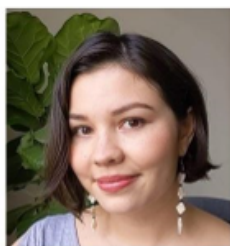
[Intermediate F2F](#) 10am Fridays @ EL with **Anita Curtis**.

"Bridge Basics" Online, 10am on Tuesdays with **Liz Wilkinson**

"Supervised Sessions" Thursdays at 7pm & Saturdays at 10am, led by **Jenny Barnes & Allan Pike**
Pre session Tips and advice with Mike, Sue, Johnno & Jamie.
Face-to-face beginners' lessons have restarted at East Lindfield, from 2nd May at 7pm with **John Newman**, and from 15th August at 10am with **Liz Wilkinson**. Contact is Kay Moyes (moyes_kay@hotmail.com)

Read More - Player Development (Basic & Intermediate Courses, Supervised, Director Tips, Beginners)

Build on the Basics – with Jessica Brake



These lessons are suitable for those who have been playing for around 3 months – 1 year or have come back to bridge after a long break.

There are 20 topics in total – upcoming topics are listed below. Attend all lessons, or just the ones that interest you!

DATE	TOPIC
May 4-5	Weak Twos
May 11-12	Other pre-empts – let's get in the way!
May 18-19	Responder's NT Bids
May 25-26	Holding up in NT
June 1-2	2C Game Force



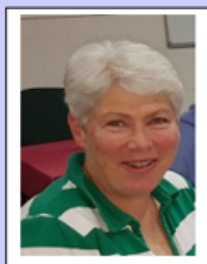
Join "live" on Zoom –
Wed & Thurs 10am
 OR watch in your own time!
 Each week you will be sent:

- 1) Recording of the lesson
- 2) Lesson notes
- 3) Quiz (most weeks)

For information or to sign up email jessicabrakebridge@gmail.com

NSBC Gentle Hand Analysis

May 2022 Program ONLINE WEDNESDAYS at 2pm
with Anita Curtis



Gentle hand analysis consolidates everything learnt in improvers and introduces new ideas through hand analysis. Defence, declarer play & bidding are all targeted by examining 8 new hands each fortnight.

Date	Lesson Topic
Wed May 4	Gentle hand analysis 5
Wed May 11	NO LESSON
Wed May 18	Gentle hand analysis 6
Wed May 25	NO LESSON
Wed Jun 1	Gentle hand analysis 7

This award was presented to **Felix Shteyman**,
 for the Highest Masterpoint accumulation in 2021



(scoring **95 MP**) as an East Lindfield Member



The April Masterpoints have been tallied by the ABF MP Centre and club master point rank promotions determined for end of April. 10 Members gained a promotion. More details in Masterpoint eNews.

[Read More - Club MP Rank Promotions eNews](#)

Links to key sites in our website

[Our Website Home Page](#)
[Our Facebook Home Page](#)
[RB Weekly Sessions](#)
[F2F Weekly Sessions](#)
[Pianola Results](#)
[RB Detailed Results](#)
[Lookup Your Masterpoints](#)

Other sites of interest include

[Thursday Competitions](#)
[Monthly Winners lists](#)
[2022 Congress Winners](#)
[Complete Apr Session Winners](#)
[Current May Session Winners](#)
[RealBridge Practice Links](#)
[Pianola Login](#)

More Bulletins to read?

[ABF Newsletter](#) (about 6 per year, Latest **April 2022**)

[NSWBA eCongress News](#) (Issued monthly, Latest May 2022)

Congress Events that may Interest you

[Barrier Reef Congress](#) F2F May 9-13

[Coffs Harbour Swiss Teams](#) F2F May 14-15

[NSWBA Seniors ITS](#) F2F May 20-22

[Tamworth Swiss Pairs](#) F2F May 21-22

[Taree Swiss Butler IMP Pairs](#) (Stepbridge) online May 22

[NSWBA State Mixed Pairs Championship](#) F2F May 28-29

[NSWBA Autumn Swiss Pairs](#) F2F May 29

[NSWBA Teams of 3](#) F2F June 5

VBA/ABF [Victor Champion Cup](#) F2F June June 6-13

NSBC [Festival 2 Men & Truck Restricted Congress](#) @ EL 18/19 June

NSBC [Festival Major Events](#) @ RB/EL 23-26 June

NSBC [Winter \(Gender\) Matchpoint Pairs](#) 2 Thursdays June



NORTH SHORE BRIDGE CLUB

The Club for the BEST Bridge Game
in Sydney & Online

THE WILLIS

The Willis Recreation & Sports Centre
325A Eastern Valley Way, Castle Cove

EAST LINDFIELD

Lindfield Rollers Bowling Club
2b Carlyle Road, East Lindfield

ONLINE

<https://www.northshore.bridge-club.org/>

[View this email in your browser](#)

*Copyright © 2022 *NSBC*, All rights reserved.*

Our mailing address is: manager@bridgeclub.com.au

Want to change how you receive these emails?

You can update your preferences or unsubscribe from this list.

